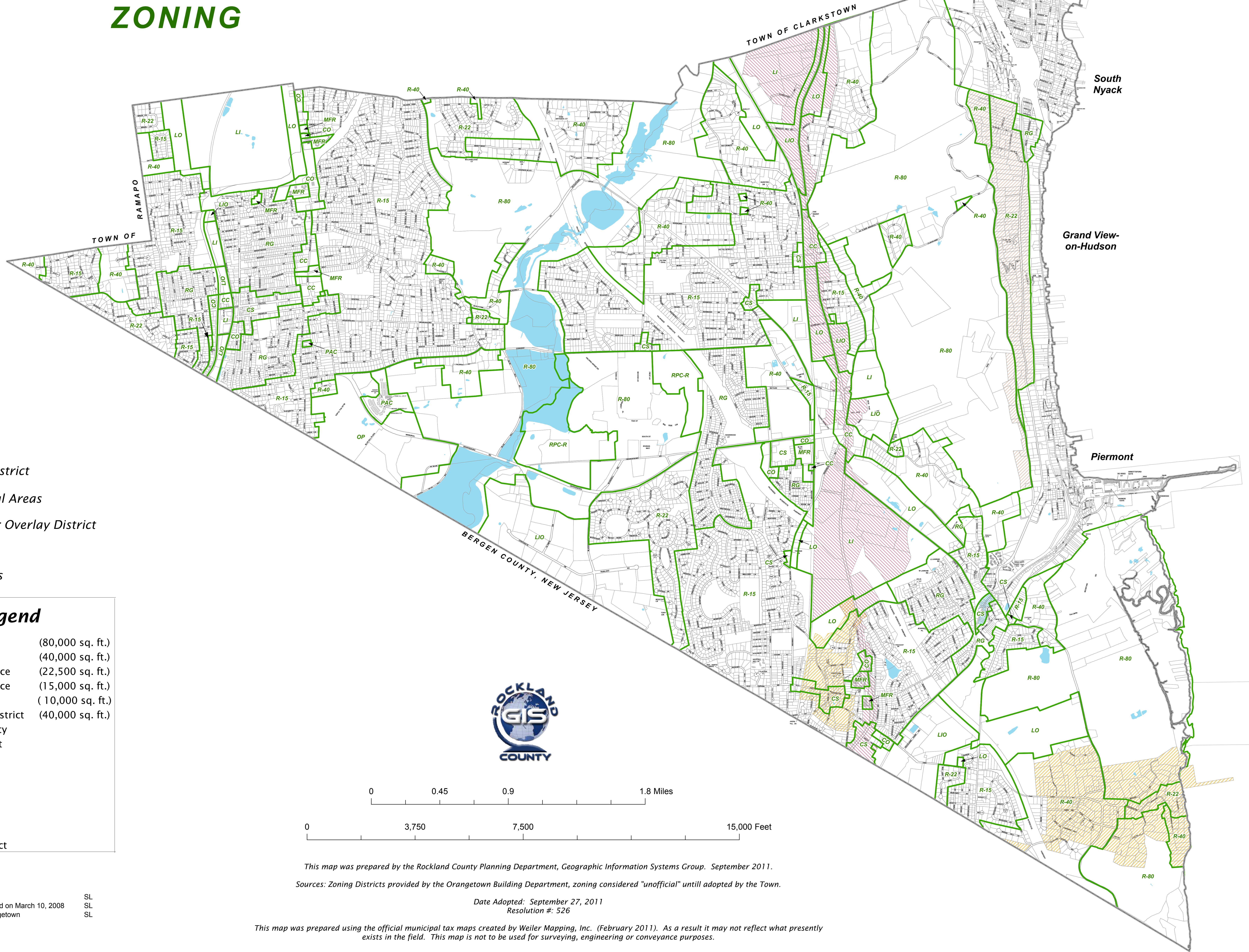
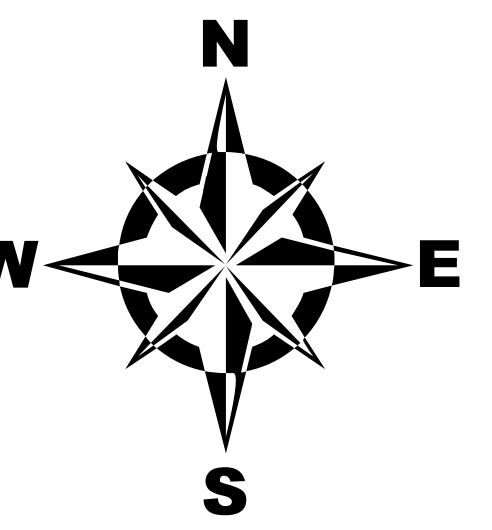


TOWN OF ORANGETOWN

Rockland County, NY

ZONING

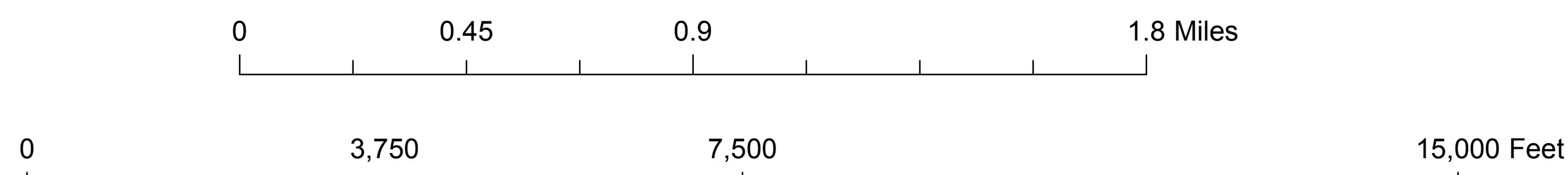


LEGEND

- Town Boundary
- Village Boundary
- Parcel Boundaries
- Road Right-of-Way
- Historic District
- Route 303 Overlay District
- Critical Environmental Areas
- Spakill Hamlet Center Overlay District
- Zoning Districts
- R-40** Zoning District Labels

Zoning Legend

- R-80 - Rural Residence (80,000 sq. ft.)
- R-40 - Low Density Residence (40,000 sq. ft.)
- R-22 - Medium Density Residence (22,500 sq. ft.)
- R-15 - Medium Density Residence (15,000 sq. ft.)
- RG - General Residence (10,000 sq. ft.)
- MFR - Multifamily Residence District (40,000 sq. ft.)
- PAC - Planned Adult Community
- LO - Laboratory Office District
- LIO - Light Industrial - Office
- OP - Office Park
- CS - Community Shopping
- CC - Retail Commerce
- CO - Commercial - Office
- LI - Light Industrial
- RPC-R - Recreation Zoning District



Zoning Revision Notes:

- 5/08 R-15 Zone Change SL
- 7/08 Historic Districts Adjusted per Town Board on March 10, 2008 SL
- 9/11 Zoning Updates made per Town of Orangetown SL

This map was prepared by the Rockland County Planning Department, Geographic Information Systems Group. September 2011.
 Sources: Zoning Districts provided by the Orangetown Building Department, zoning considered "unofficial" until adopted by the Town.
 Date Adopted: September 27, 2011
 Resolution #: 526

This map was prepared using the official municipal tax maps created by Weiler Mapping, Inc. (February 2011). As a result it may not reflect what presently exists in the field. This map is not to be used for surveying, engineering or conveyance purposes.